

Solid & Metallic



ENRICHING ARCHITECTURE

Aluminium Composite Panel | FR, B1, B2 | HPL | Partition Panel

A PERFECT BLEND OF
STRENGTH & GRANDEUR





Apex's in building material manufacturing organizations are slowly dominating the present market and aluminium composite panel manufacturers are in rapid domination. 2019, it's when we enrolled in the industry. We want to prove our eminence by introducing a wide range of aluminium composite panel for miscellaneous applications. We want to demonstrate our capability through our product.

On second thoughts, we are prompt in making our mark by our avant-garde excellence in aluminium composite panel production. Moreover, our intent is to be meticulously concentrated to the manufacturing process and hence producing a quality so exemplary that it grants thorough fire protection to the buildings that are enveloped by it.

To achieve an unquestionable output, fidelity in our production unit is our key. Manufacturing our product from zero to the ultimate merchandise we offer only what is splendid. Moreover, our workforce and employees are nurtured to foster teamwork, uplift talent, enhancing leadership capability to warrant righteous products.

PRASO would withdraw from a whole lot but when it comes to quality, criterion and business ethics striding back is contradicted. Our QC department has the prime crew of quality managers indulged in inspecting our products in-house. To ensure that flaw-free products penetrate the market, we stride by rigorous means.

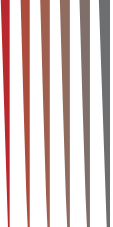
We adhere to eco-friendly reporting standards & ensure necessary compliance. Human activities of development and urbanization constantly manipulates with the ecosystem, our motto is to proceed in such a manner that the ecosystem is not vandalised. On the contrary, we are an esteemed Founding Member of the Indian Green Building Council.

To grow the supplier of choices, delivering premium quality of ACP, and generating value for customers. Swift delivery of product in time and the best in market service is prioritized. After all customer satisfaction is on top in our mandatory list.

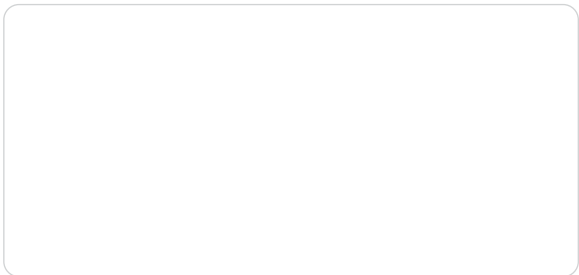


A close-up, low-angle shot of a modern building's exterior. The building features a series of curved balconies or terraces that wrap around its facade. Each balcony is painted a different color, creating a vibrant rainbow effect. The colors transition from red at the top, through orange, yellow, and green, to blue at the bottom. The balconies are separated by dark, rectangular windows. The overall composition is dynamic, with strong diagonal lines and a sense of movement.

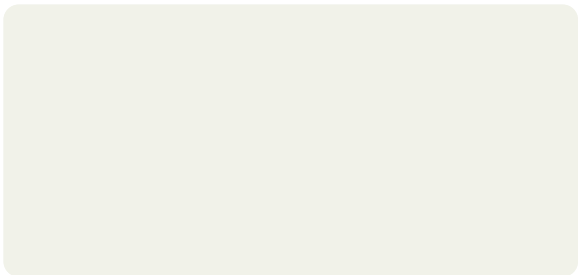
PRASO
— LET'S BUILD —



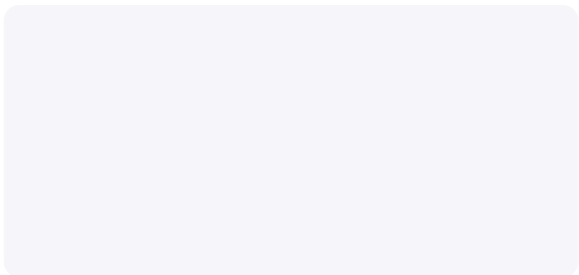
Supreme Solids



PURE WHITE | PS-21



OFF WHITE | PS-22



ICY WHITE | PS-24



SOLID RED | PS-25



TRAFFIC YELLOW | PS-28



LEMON YELLOW | PS-29



SOLID ORANGE | PS-30



SEA BLUE | PS-31





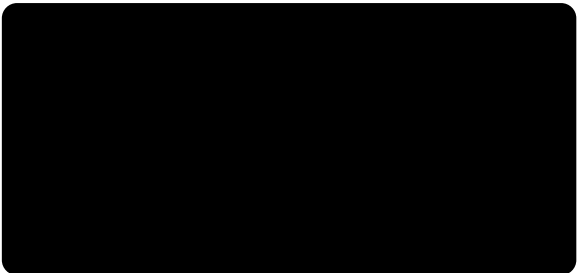
Supreme Solids



SAM BLUE | PS-32



DARK BLUE | PS-33



SOLID BLACK | PS-35



SOLID GREY | PS-36



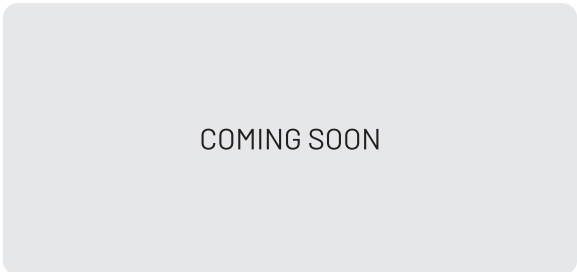
CHOCO - BROWN | PS-37



BURGUNDY | PS-38



O GREEN | PS-40



COMING SOON





Magnificent Metals



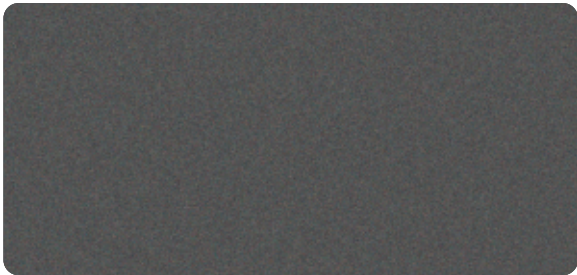
EXOTIC SILVER | PS-01



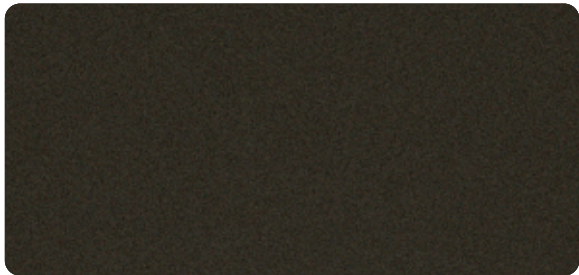
METALLIC SILVER | PS-02



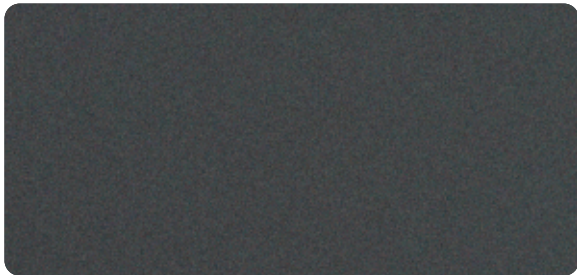
CHAMPAGNE GOLD | PS-04



BLACK SILVER | PS-05



SPECTRA C SILVER | PS-06



SPECTRA G SILVER | PS-07



PENNY COPPER | PS-08



GUN METALLIC | PS-09





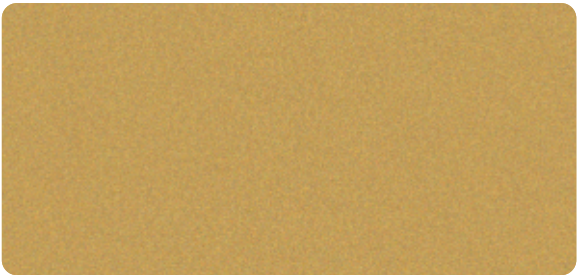
Magnificent Metals



METALLIC BRONZE | PS-10



EGYPTIAN BRONZE | PS-11



RICH GOLD | PS-12



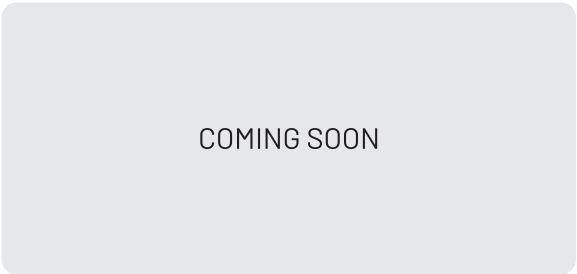
PEARL BROWN | PS-13

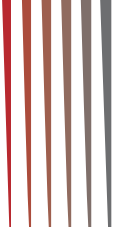


JADE GREEN | PS-14



BLUE SILVER | PS-15



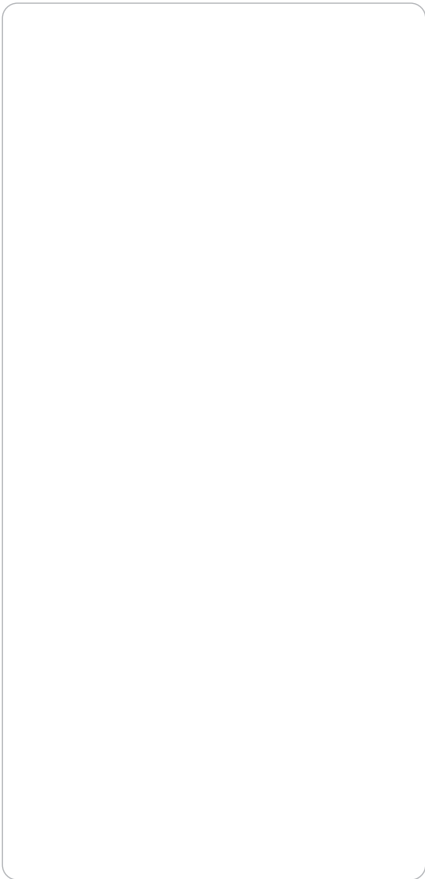


Galaxy

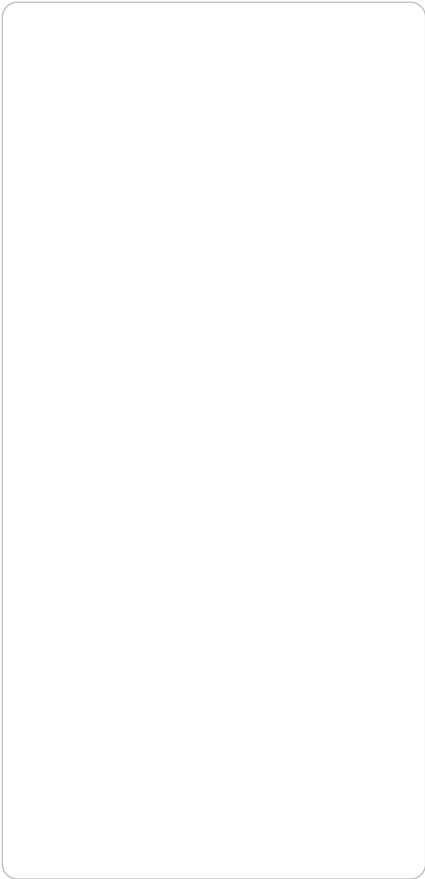
Harmonic High Gloss



GALAXY BLACK | PS-65



HIGH GLOSS WHITE
PS-210



GALAXY WHITE | PS-61



HIGH GLOSS BLACK | PS-350

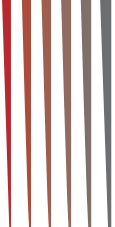




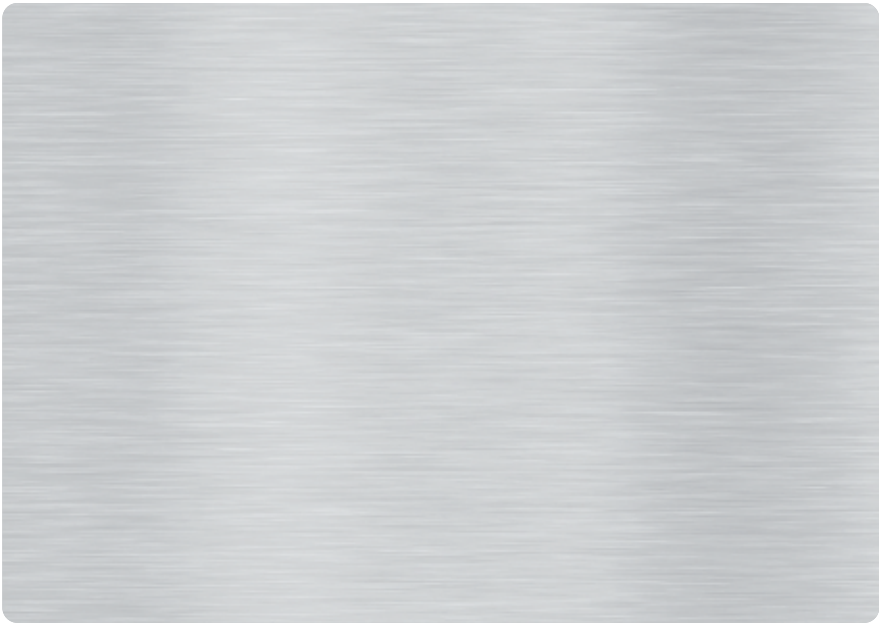
HIGH GLOSS RED
PS-250







Brush Mirror Series



BRUSH SILVER | PS-51



BRUSH GOLD | PS-52



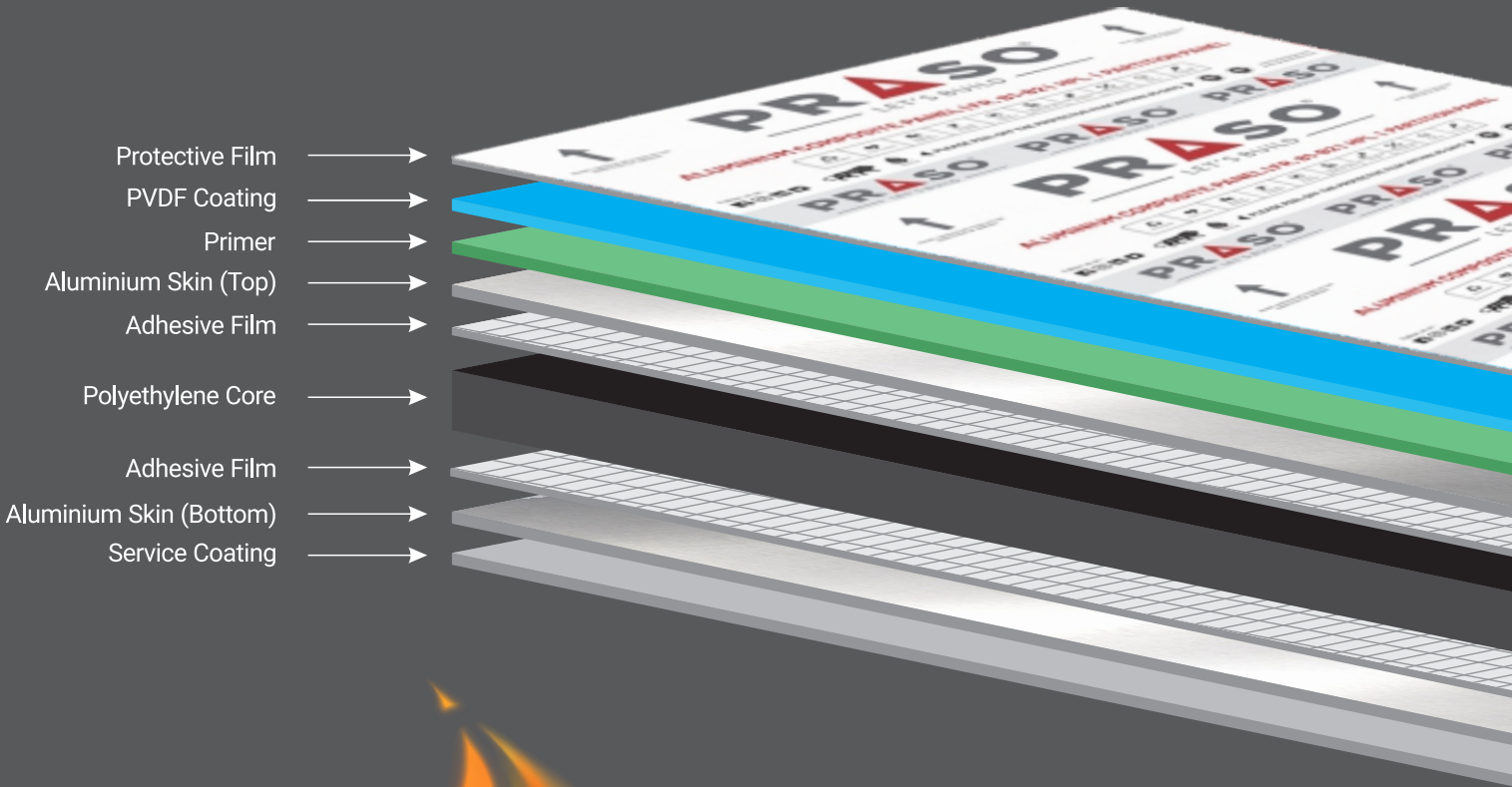
MIRROR GOLD | PS-56



MIRROR SILVER | PS-55



Aluminium Composite Panel Structure



We have developed Fire Retardant Aluminium Composite Panel which is composed of two skins of aluminium laminated to either side of a mineral-filled thermoplastic core. The Aluminium surfaces are cobs-coated with advanced fluorocarbon PVDF and next-generation fluorocarbon FEVE resin in a variety of finishes and colors.

Technical Specification



APPLICATION – EXTERIOR / INTERIOR

PANEL DIMENSIONS

Standard Size	2440mm x 1220mm	3050mm x 1220mm	3050mm x 1220mm	
---------------	-----------------	-----------------	-----------------	--





GRADES WITH DETAILS

Series Name	Ruby / Prime	Diamond/Bond	Silver/Shine	Eco/Panels
Panel Thickness	4mm	4mm / 3mm	3mm	3mm
TopCoil Thickness	0.50	0.25	0.15	0.10
Top Coating Thickness	25µ±3	25µ±3	15µ±3	15µ±3
LDPE Core	3.0mm	3.5mm / 2.5mm	2.7mm	2.8mm
BottomCoil Thickness	0.50	0.25	0.15	0.10
Bottom Coating Thickness	7µ+1 ServiceCoat	7µ+1 ServiceCoat	7µ+1 ServiceCoat	7µ+1 ServiceCoat

PRODUCT TOLERANCE

Width	±2.0mm	±2.0mm	±2.0mm	±2.0mm
Length	±4.0mm	±4.0mm	±4.0mm	±4.0mm
Thickness Coil	±0.03mm	±0.03mm	±0.03mm	±0.03mm
Thickness Panel	±0.2mm	±0.2mm	±0.2mm	±0.2mm
Squareness	Maximum 5.0mm	Maximum 5.0mm	Maximum 5.0mm	Maximum 5.0mm
Bow	Max. 0.8% of width and/or length	Max. 0.8% of width and/or length	Max. 0.8% of width and/or length	Max. 0.8% of width and/or length

PRODUCT CATEGORY

 RUBY / PRIME  DIAMOND / BOND  SILVER / SHINE  ECO / PANELS

Supplier




Recyclable


Eco Friendly


Sound Insulated


Helps buildings quality for LEED


PVDF Coating


Weather Resistant


Thermally Insulated


High Mechanical Strength


Lower Coefficient of Expansion


Use of Lead-freepaints

NOTES:

- The samples in the catalogue are for reference purpose only. Shades may vary batch to batch (±65). Color perception is affected by the lighting condition, degree of gloss and textures.
- Customized panel thickness and length available on request.
- Company warranty is limited to the cost of the product only.
- Praso reserves the right to make alteration and / or discontinuation of color.
- 3003 Alloy available in Diamond and Ruby Series only.



SOMMANI ALUCORE INDIA PVT. LTD.



CORPORATE OFFICE

16, Panchamrut Bungalows Part-1, Opp. CIMS Hospital, Science City Road, Ahmedabad, Gujarat-380 060, INDIA.
Ph.: 079-27712829 | Web.: www.prasoacp.com | www.prasoindia.com

MANUFACTURING FACILITY

B/H, Electronic SEZ Unit, Nr. Tata Cross Road, GIDC-Kolavada Road, Pethapur, Gandhinagar, Gujarat, INDIA

AHMEDABAD

43, Swaminarayan Estate, Nr. Ujala Circle, B/h, Gopal Hotel, Sarkhej, Ahmedabad - 382210

BENGALURU

No 39, Ground Floor, New Timber Yard layout, off. Mysore road, Bengaluru-560026

BUSINESS ASSOCIATE

ALUCOWIND PANELS

MUMBAI

Building No. B-5, Godown No. 7-8, Prithvi Complex, Kalher Pipe Line Road, Kalher, Bhiwandi, Thane, Maharashtra - 421302

SURAT

74, Shiv Nagar Society, Nr. Kailash Chokdi, Gandhi Kutir, (U.M.Road) To 80 Ft Bamroli Road, Pandesara, Surat - 394 210 (Gujarat)